

VYRTYCH

ODIS-LED

**NEW LUMINAIRE
FOR CLEAN ROOMS**

ODIS-LED

European product – Made in Czech Republic

Certified for clean areas in compliance with ISO 14644-1

Wide variability of diffusers for different applications

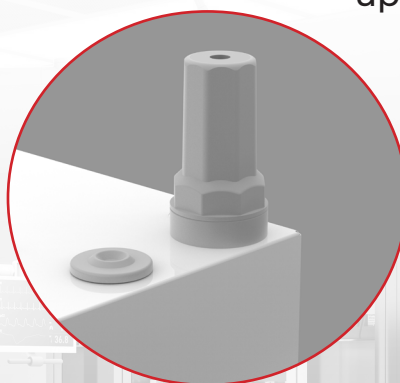
Variability of housing dimensions

Elimination of sediments and easy cleaning because of clean screwless design

High energy efficiency up to 164 lm/W

Homogenous lighting distribution

Extreme fast installation because of used connector, where no need to open luminaire



CHARACTERISTICS

APPLICATION:

Recessed LED lighting fixture **designed for clean areas** in hospitals (operating theatres, Intensive Care Units, ambulances, surgery rooms, etc.), laboratories, microelectronics production, food industry. Housing made of white painted steel sheet (RAL9016), stainless steel AISI304 or AISI316 as option. Diffuser made of clear glass in combination with opal or microprismatic diffuser, opal or microprismatic plastic diffuser. **Clean screwless design for easy cleaning. Rounded edges of the frame eliminates the sediments and bacteriums creation.** Equipped with high quality electronic components for **high lifetime up to 100 000 h and efficiency up to 164 lm/W**. As standard also **available versions with CRI>90 and UGR<19**. Characterized by high lower degree of protection (IP66). Suitable for ambient temperatures from -20°C up to 60°C. Classified for **clean areas in compliance with ISO 14644-1**. **Connection by means of ADELS connector with no need to open luminaire – fast mounting and low costs for installation.** Large variability of luminaires according to installation types - false ceiling M600/625, metal ceiling M598/M623 or plasterboard / other atypical ceilings.

DRIVER:

EP – electronic 220-240 V/ 50-60 Hz AC,
220-240 V DC 0 Hz

LIGHT SOURCE:

LED, 4000K, CRI 80/90+, MacAdam3

HOUSING:

White painted steel sheet RAL 9016

DIFFUSER:

GLM – matt tempered safety glass

OP – opal plexiglass

MP – microprismatic plexiglass

CGOP - clear tempered safety glass
+ opal plexiglass

CGMP - clear tempered safety glass
+ microprismatic plexiglass

FASTENING:

Large variability of luminaires according to installation types:

- mounting into false ceilings of M600/M625 modules
- installation using nivelation set for metal suspended ceilings M598 / M623
- installation using nivelation set for plasterboard

CONNECTION:

Integrated ADELS CONNECTOR allows for fast installation without a need to open luminaire. The luminaire will be connected to screwless terminal block and installed into false ceiling.

CALCULATED LIFETIME - LED MODULES:

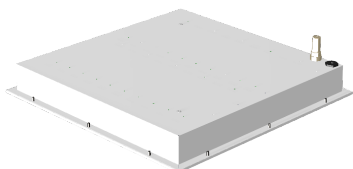
L80B10 Ta30 – 70 000 h

L70B10 Ta30 – 100 000 h

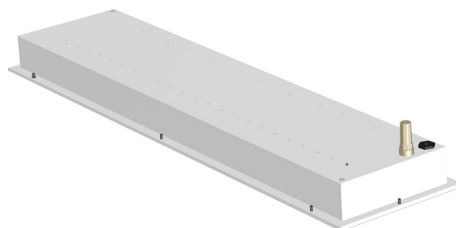
VARIANTS OF LUMINAIRE

SHAPE OF LUMINAIRE:

ODIS-LED - **SQ** (SQUARE)



ODIS-LED - **R** (RECTANGULAR)



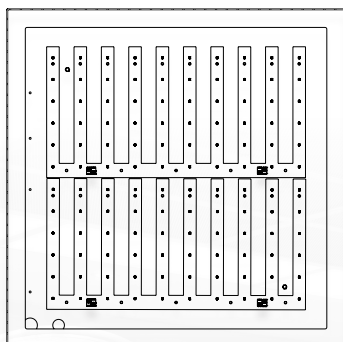
LED SOURCE:

To meet the expectations of projects, designers and investors, we have prepared luminaires ODIS-LED in two versions with regard to the LED source equipment.

ODIS-LED

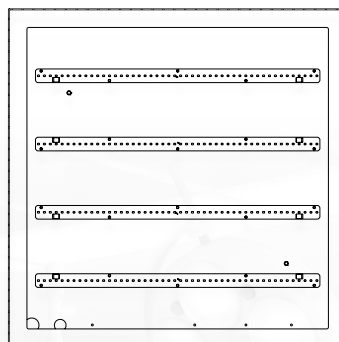
Full-screen LED modules inside.

This premium luminaire variant is characterised by homogeneous light dispersion.



ODIS-LED-L (LINEAR)

Linear LED modules inside.



TYPICAL APPLICATION



Microelectronic
Semiconductor
fabrication



Hospitals



Pharma
& Laboratories



Operating theater



Food & beverages
production areas

10/2023

VYRTYCH