

CLEAN & MEDICAL



ODIS-LED



Clean room luminaire - homogenous

- IP66/IP50
- Up to 10 368 lm
- Up to 164 lm/W
- \updownarrow -20 °C to +60 °C



Characteristics:

- Painted steel housing RAL 9016
- Diffuser:
 - GLM:** matt tempered safety glass
 - OP:** opal plexiglass
 - MP:** microprismatic plexiglass
 - CGOP:** clear tempered safety glass + opal plexiglass
 - CGMP:** clear tempered safety glass + microprismatic plexiglass
- Available in different colour temperatures (Tc)
- Emergency kit/Dimming on request
- Recessed mounting:
 - false ceiling M600/M625
 - metal ceiling M598/M623
 - plasterboard/other atypical ceiling



Hospitals



Microelectronic
& Semiconductor
fabrication



Pharma
& Laboratories



Operating theater



Food & beverages
production areas

ODIS-LED-SF



Clean room luminaire

- IP65
- Up to 12 000 lm
- Up to 167 lm/W
- \updownarrow -20 °C to +50 °C



Characteristics:

- Painted steel housing RAL 9016
- Diffuser:
 - GLM:** matt tempered safety glass
 - CGMP:** clear tempered safety glass + microprismatic plexiglass
 - CGOP:** clear tempered safety glass + opal plexiglass
- Available in different colour temperatures (Tc)
- Emergency kit/Dimming on request
- Surface mounting



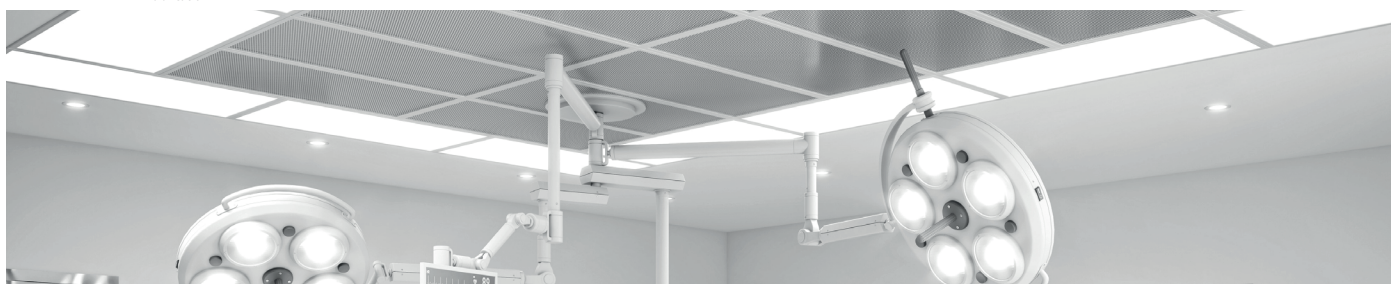
Hospitals



Microelectronic
& Semiconductor
fabrication



Pharma
& Laboratories



ODIS-LED-L



Clean room luminaire - linear

- IP66/IP50
- Up to 9 833 lm
- Up to 167 lm/W
- \updownarrow -20 °C to +60 °C



Characteristics:

- Painted steel housing RAL 9016
- Diffuser:
 - GLM:** matt tempered safety glass
 - OP:** opal plexiglass
 - MP:** microprismatic plexiglass
 - CGOP:** clear tempered safety glass + opal plexiglass
 - CGMP:** clear tempered safety glass + microprismatic plexiglass
- Available in different colour temperatures (Tc)
- Emergency kit/Dimming on request
- Recessed mounting:
 - false ceiling M600/M625
 - metal ceiling M598/M623
 - plasterboard/other atypical ceiling



Hospitals



Microelectronic
& Semiconductor
fabrication



Pharma
& Laboratories



Operating theater



Food & beverages
production areas

HOOVER/3-LED



Clean room luminaire

- IP65
- Up to 7 360 lm
- Up to 141 lm/W
- \updownarrow -20 °C to +30 °C



Characteristics:

- Painted steel housing RAL 9016
- Diffuser:
 - OP** - opal PMMA diffuser
 - MP** - microprismatic PMMA diffuser
 - GLM** - matt tempered safety glass
 - GLMMP** - matt tempered safety glass + microprismatic diffuser
- Available in different colour temperatures (Tc)
- Emergency kit/Dimming on request
- Recessed mounting:
 - false ceiling M600/M625
 - metal ceiling M598/M623
 - plasterboard/other atypical ceiling



Hospitals



Microelectronic
& Semiconductor
fabrication



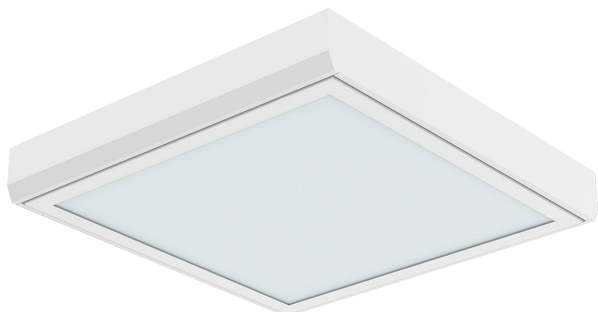
Pharma
& Laboratories



Food & beverages
production areas



HOOVER4-LED



Clean room luminaire

- IP65
- Up to 7 439 lm
- Up to 138 lm/W
- \updownarrow -20 °C to +30 °C



Characteristics:

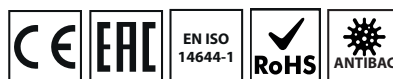
- Painted steel housing RAL 9016
- Diffuser:
 - OP** - opal PMMA diffuser
 - MP** - microprismatic PMMA diffuser
 - GLM** - matt tempered safety glass
 - GLMMP** - matt tempered safety glass + microprismatic diffuser
- Available in different colour temperatures (Tc)
- Emergency kit/Dimming on request
- Surface mounting

HOUND/3-MAG-LED



Clean room luminaire

- IP65
- Up to 7 012 lm
- Up to 149 lm/W
- \updownarrow -20 °C to +30 °C



Characteristics:

- Painted steel housing RAL 9016
- Diffuser:
 - GLM**: matt tempered safety glass
- Available in different colour temperatures (Tc)
- Emergency kit/Dimming on request
- Recessed mounting:
 - false ceiling M600/M625
 - metal ceiling M598/M623
 - plasterboard/other atypical ceiling



Hospitals



Microelectronic
& Semiconductor
fabrication



Pharma
& Laboratories



Food & beverages
production areas



Hospitals



Microelectronic
& Semiconductor
fabrication



Pharma
& Laboratories



BORDER-N-LED

Ex ZONE 2/21, 22



Explosion proof lighting panel

ZONE 2/21

Ex II 3G Ex nR IIC T6 Gc
Ex II 2D Ex tb op is IIIC T85°C Db
certificate FTZÚ 23 ATEX 0038X

ZONE 2/22

Ex II 3G Ex nR IIC T6 Gc
Ex II 3D Ex tc IIIC T85°C Dc
certificate FTZÚ 23 ATEX 0039X

- IP66
- Up to 9 996 lm
- Up to 158 lm/W
- -40 °C to +60 °C



Characteristics:

- Robust steel RAL 9016 sheet or stainless steel AISI304, AISI316
- Classified for clean areas in compliance with ISO 14644-1
- Available in different colour temperatures (Tc)
- Emergency kit/Dimming on request

Diffuser:

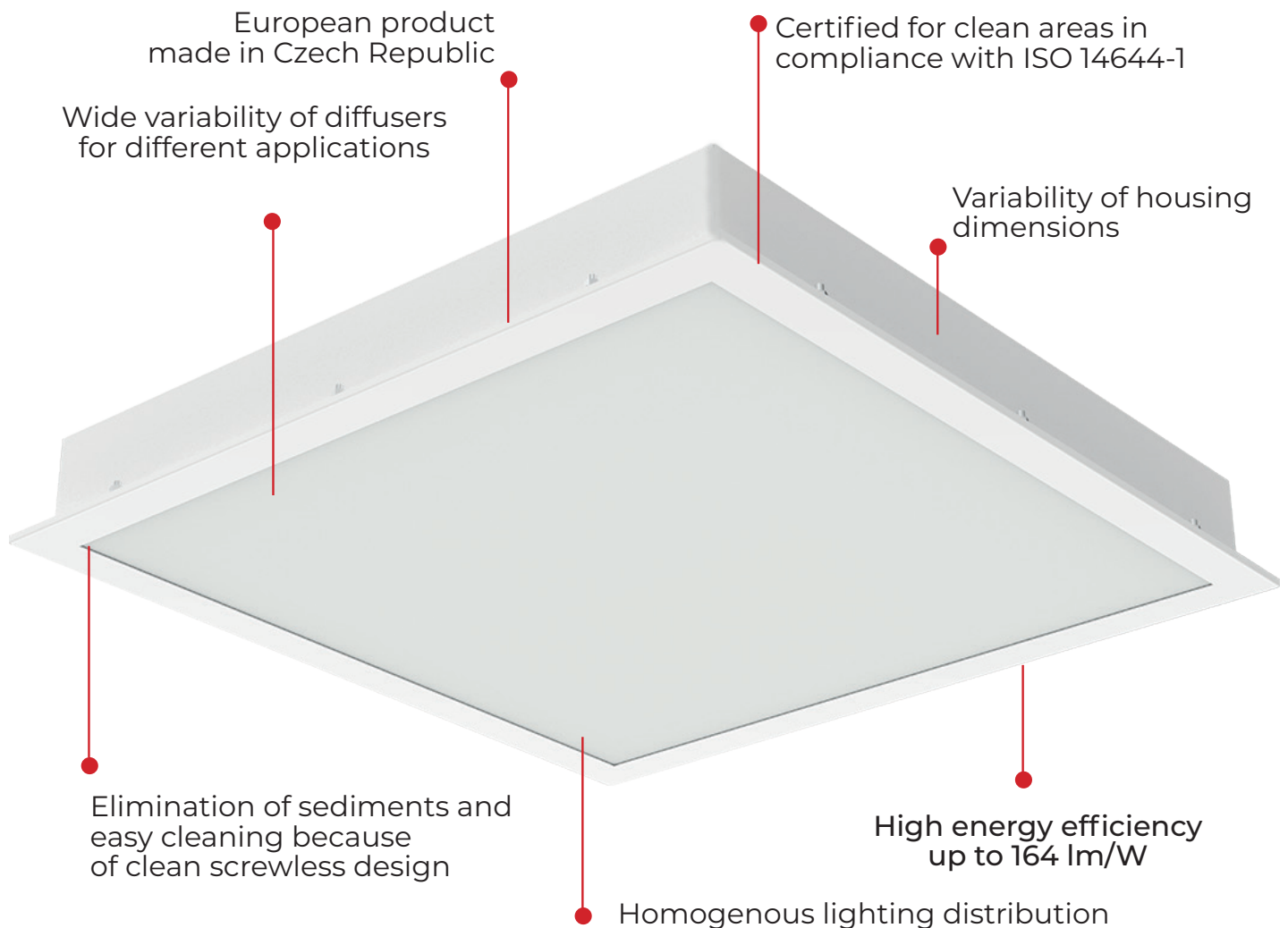
- **GLM:** matt tempered safety glass
- **OP:** clear PC + opal plexiglass
- **MP:** clear PC +microprismatic plexiglass
- **CGOP:** clear tempered safety glass + opal plexiglass
- **CGMP:** clear tempered safety glass + microprismatic plexiglass

Large variability of luminaires according to installation types:

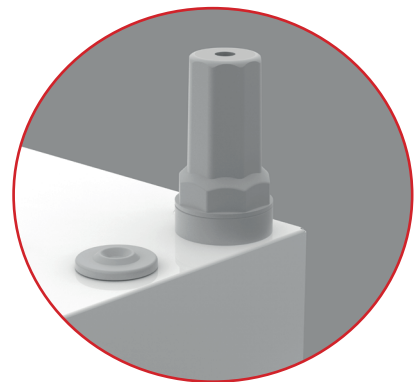
- mounting into **false ceilings of M600/M625** modules
- installation using nivelation set for **metal suspended ceilings M598/M623**
- installation using nivelation set for **plasterboard**
- installation using frame for surface mounting



ODIS-LED



Integrated ADELS CONNECTOR allows for fast installation without a need to open luminaire. The luminaire will be connected to screwless terminal lock and installed into false ceiling.



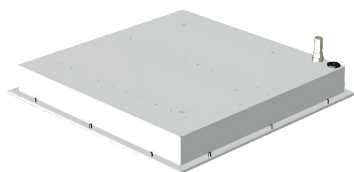
TYPICAL APPLICATION



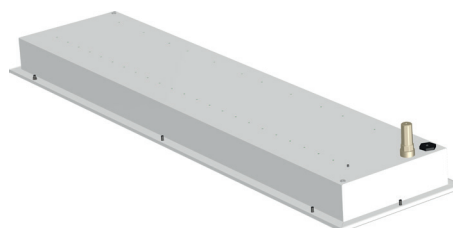
VARIANTS OF LUMINAIRE

SHAPE OF LUMINAIRE:

ODIS-LED - **SQ** (SQUARE)



ODIS-LED - **R** (RECTANGULAR)

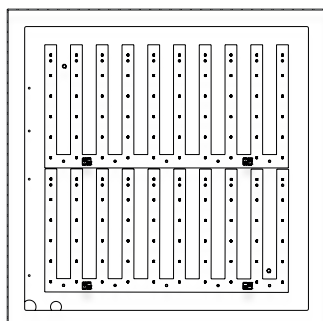


LED SOURCE:

To meet the expectations of projects, designers and investors, we have prepared luminaires ODIS-LED in two versions with regard to the LED source equipment.

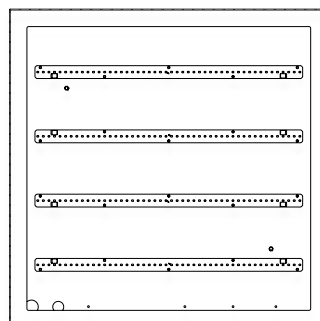
ODIS-LED

Full-screen LED modules inside.
This premium luminaire variant is characterised by homogenous light dispersion.



ODIS-LED-L (LINEAR)

Linear LED modules inside.



ČSN EN ISO 14644-1

Clean rooms and corresponded controlled areas - Classification of air cleanness according to particles concentration for LUMINAIRES series ODIS-LED meets the requirements for clean areas CLASS 4, 5, 6, 7, 8 and 9 according to above mentioned norm:

ISO Classification number (n)	Maximum concentration limits (particles/m ³ of air) for particles equal to and larger than the considered ones shown below					
	0,1µm	0,2µm	0,3µm	0,5µm	1µm	5µm
ISO Class 1	10	2				
ISO Class 2	100	24	10	4		
ISO Class 3	1000	237	102	35	8	
ISO Class 4	10000	2370	1020	352	83	
ISO Class 5	100000	23700	10200	3520	832	29
ISO Class 6	1000000	237000	102000	35200	8320	293
ISO Class 7				352000	83200	2930
ISO Class 8				3520000	832000	29300
ISO Class 9				35200000	8320000	293000

ANTIBACTERIAL COATING ANTIBAC



ANTIBAC FOR PRODUCTION
LUMINAIRES FOR CLEAN ROOMS





ANTIBAC: INNOVATIVE ANTIMICROBIAL COATING

ANTIBAC is a high quality powder coating that brings not only aesthetic appeal but also functional benefits thanks to its advanced antimicrobial protection. This coating is the ideal choice for luminaires designed for environments where it is essential to maintain low levels of microbial contamination, such as medical facilities, laboratories, food processing plants, educational facilities or public areas.

BIOCOTE® ANTIMICROBIAL TECHNOLOGY

ANTIBAC uses BioCote® advanced antimicrobial technology based on the natural properties of silver ions. This technology is built directly into the structure of the coating and effectively reduces the amount of microbes, including bacteria and fungi, that can build up on the surface of the luminaires. Independent laboratory tests have shown that surfaces treated with BioCote® technology show a reduction of up to 99.9% in bacteria and mould.

HOW BIOCOTE® WORKS:

BioCote® technology works continuously and provides long-term protection against microorganisms thanks to three main mechanisms of action of silver ions:

1. Disruption of the cell wall:

Silver ions bind to the cell walls of microbes such as bacteria and fungi. This binding disrupts the structure of the cell wall, leading to cell damage and subsequent cell death. This process weakens the microorganisms and renders them harmless.

2. Enzyme inactivation:

Silver ions penetrate the cell and bind to key enzymes that are essential for its vital functions. The binding of silver ions to enzymes disrupts their activity, blocking cellular processes such as metabolism and energy production, leading to the death of the microorganism.

3. Preventing DNA replication:

Silver ions interact with the DNA of microorganisms, blocking their ability to reproduce. This prevents the spread of microorganisms and significantly reduces the risk of transferring them to other surfaces.

ANTIBAC
reduces the presence
of microbes on the
product
by up to:

99,99%

ANTIBAC reduces
the presence of
microbes
on the product

after 15 minutes of

86%

after 2 hours of

99,5%

AREAS OF APPLICATION ANTIBAC

ANTIBAC is designed for a wide range of applications where hygiene is key:

- **Healthcare:** hospitals, surgeries, clinics where infection prevention and patient health protection is a priority.
- **Food and catering:** kitchens, canteens, food processing plants that require a high level of hygiene and protection against contamination.
- **Public areas with high movement of people:** changing rooms, public transport, airports, schools where it is important to minimise the risk of spreading micro-organisms.



IMPORTANCE OF ANTIMICROBIAL PROTECTION

Routine surface cleaning is essential to maintain hygiene, but microorganisms can multiply on untreated surfaces between cleaning cycles. ANTIBAC with BioCote® technology provides continuous protection between cleaning cycles, creating an additional layer of defence against the growth and spread of microorganisms.

ANTIBAC: Best Surface Treatment

ANTIBAC coating is designed to meet the most stringent antimicrobial standards and comply with all relevant biocidal legislation worldwide. This paint not only provides an attractive and aesthetically pleasing appearance, but also guarantees long-term protection of surfaces against microorganisms, contributing to a safer and more hygienic environment.

Thanks to the innovative BioCote® technology, ANTIBAC-treated surfaces are protected against bacterial and mould growth, increasing safety and hygiene in all areas of use. This makes the coating the ideal choice for all environments where cleanliness, hygiene and aesthetics are emphasised.



VYRTYCH

We are a Czech manufacturer of industrial luminaires with more than 30 years of experience, specializing in a wide range of industrial and luminaires for special applications suitable for various industries such as oil&gas, chemical& pharmaceutical sector, medical, industrial and others.



100+
employees



30+ years
in the market



70+ export
countries



European
producer



60 000+
company area





VYRTYCH a.s.
Židněves 116
294 06 Březno
CZECH REPUBLIC

WWW.VYRTYCH.COM

12/2024