

INDUSTRY LIGHTING



EUROPA-LED EUROPA-LED-H



Linear luminaire

- IP66
- IK10
- Up to 18 143 lm
- Up to 167 lm/W
- \updownarrow -20°C to +50°C
- Length - L06/L12/L15



Characteristics:

- High impact polycarbonate
- housing RAL 7035
- Opal polycarbonate diffuser
- EUROPA-LED-H: deep radiant optics
- Available in different colour temperatures (Tc)
- Emergency kit/Dimming on request
- Surface or suspended mounting

Typical application:



EXTRA-LED EXTRA-LED-H



Linear luminaire

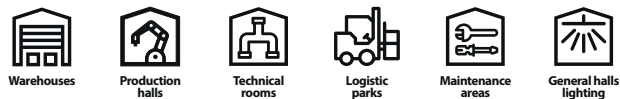
- IP66
- IK10
- Up to 17 903 lm
- Up to 164 lm/W
- \updownarrow -20°C to +50°C
- Length - L06/L12/L15



Characteristics:

- High impact polycarbonate
- housing RAL 7035
- Opal polycarbonate diffuser
- EXTRA-LED-H: deep radiant optics
- Available in different colour temperatures (Tc)
- Emergency kit/Dimming on request
- Surface or suspended mounting

Typical application:





Bulkhead luminaire

- IP66
- IK08
- Up to 3 557 lm
- Up to 176 lm/W
- \updownarrow -30°C to +60°C



Characteristics:

- Polycarbonate UV stable housing RAL 7035
- Opal polycarbonate diffuser
- Available in different colour temperatures (Tc)
- Dimming on request
- Surface or suspended mounting

Typical application:



Emergency bulkhead luminaire

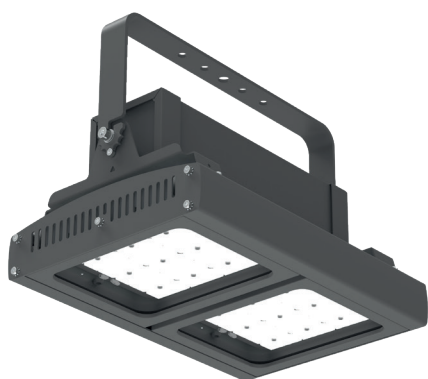
- IP66
- IK08
- Up to 887 lm
- Up to 118 lm/W
- \updownarrow 0°C to +50°C



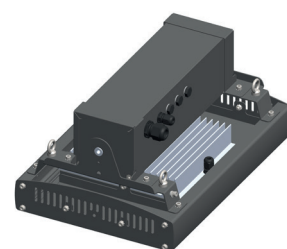
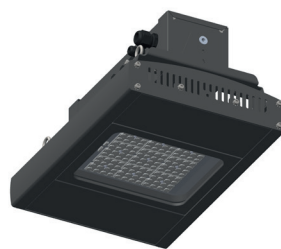
Characteristics:

- Polycarbonate UV stable housing RAL 7035
- Opal polycarbonate diffuser
- Available in different colour temperatures (Tc)
- Include set of pictograms
- Dimming on request
- Surface or suspended mounting
- The emergency version is equipped with a magnetic switch for checking the function of the emergency mode, this allows checking without opening the luminaire

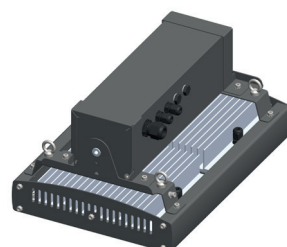
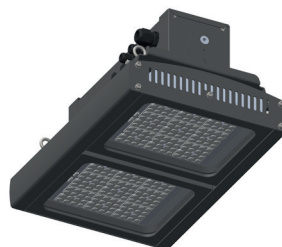




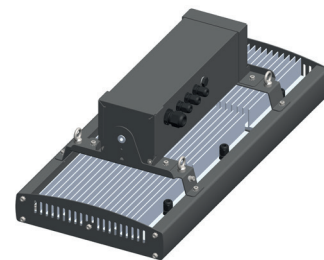
1M - 1 module



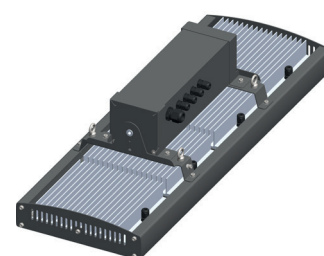
2M - 2 modules



3M - 3 modules



4M - 4 modules



Industrial HIGH-BAY

- IP66
- IK10
- Up to 43 634 lm
- Up to 179 lm/W
- \updownarrow -40°C to +70°C



Characteristics:

- Robust aluminium housing RAL 7043
- Clear tempered safety glass
- Extreme high LED lifetime
- L70B50 Ta70 - 100 000 h even at high temperatures
- Available in different colour temperatures (Tc)
- Dimming on request
- Suspended by means of 4 eye bolts M5 (standard equipment) or surface mounted by means of adjustable bracket (adjustable bracket on request only)

Typical application:



Warehouses



Production halls



Logistic parks

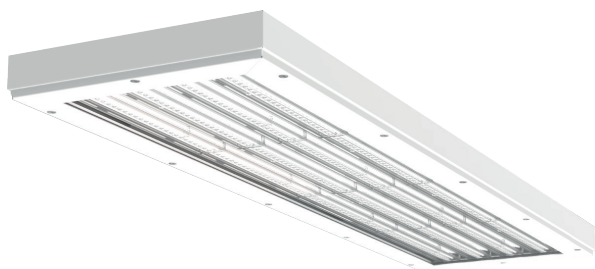


Maintenance areas



General halls lighting





Linear HIGH-BAY

- IP66
- IK08
- Up to 32 682 lm
- Up to 157 lm/W
- \updownarrow -20°C to +60°C
- Length - L06, L12



Characteristics:

- Painted steel housing RAL 9016
- Diffuser options:
CG: clear tempered glass diffuser + optics 30°/60°
OP: opal tempered glass diffuser
PC: polycarbonate diffuser
MP: microprismatic diffuser
- Available in different colour temperatures (Tc)
- Emergency kit/Dimming on request
- Surface or suspended mounting

Typical application:



Warehouses



Production halls



Logistic parks



Maintenance areas



General halls lighting



Round HIGH-BAY

- IP65
- IK08
- Up to 31 500 lm
- Up to 160 lm/W
- \updownarrow -20°C to +50°C



Characteristics:

- Painted aluminium housing RAL 9005
- Polycarbonate clear diffuser
- Available in 5000 K
- Dimming on request
- Suspended mounting

Typical application:



Warehouses



Production halls



Logistic parks



Maintenance areas



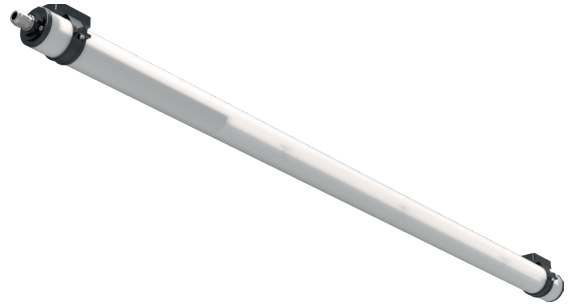
General halls lighting



AQUA-40-LED



AQUA-70-LED



Tubular luminaire

- IP66
- IK07
- Up to 7 330 lm
- Up to 144 lm/W
- -20°C to +50°C
- Length - L10/L15/L20



Characteristics:

- High impact resistant polycarbonate opal tube
- End caps from polycarbonate fiberglass
- Available in different colour temperatures (Tc)
- Emergency kit/Dimming on request
- Surface or suspended mounting

Typical application:



Warehouses



Garages



Food & beverages
production areas

Tubular luminaire

- IP66, IP68, IP69
- IK10
- Up to 5 864 lm
- Up to 115 lm/W
- -20°C to +50°C
- Length - L07/L12/L17



Characteristics:

- High impact resistant polycarbonate opal tube
- End caps from polycarbonate fiberglass
- Available in different colour temperatures (Tc)
- Emergency kit/Dimming on request
- Surface or suspended mounting

Typical application:



Food & beverages
production areas



Agriculture
& animal husbandry



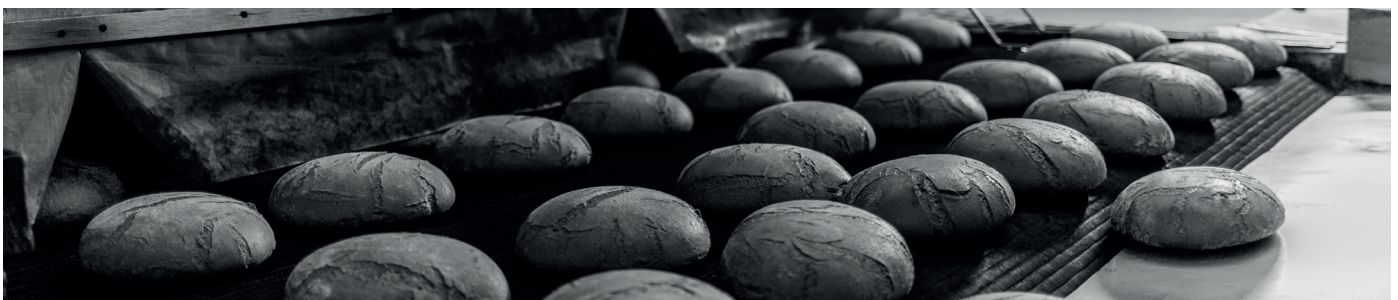
Railways



Production
halls



Maintenance
areas





Linear luminaire

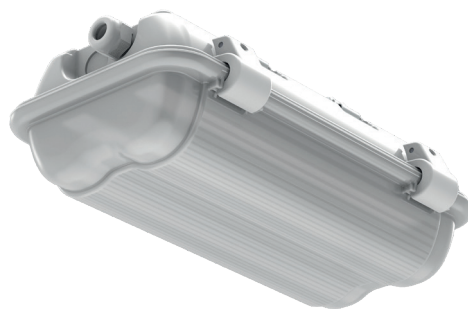
- IP66
- IK07
- Up to 16 963 lm
- Up to 150 lm/W
- \updownarrow -20°C to +60°C
- Length - L07/L13/L16



Characteristics:

- Painted steel sheet housing RAL 9016 (stainless steel on request)
- Opal tempered safety glass
- Available in different colour temperatures (Tc)
- Emergency kit/Dimming on request
- Surface or suspended mounting

Typical application:



Bulkhead luminaire

- IP66
- IK07
- Up to 2 537 lm
- Up to 131 lm/W
- \updownarrow -20°C to +50°C



Characteristics:

- Polycarbonate UV stable housing RAL 7035
- Opal polycarbonate diffuser
- Available in different colour temperatures (Tc)
- Emergency version with set of pictograms
- Dimming on request
- Surface or suspended mounting

Typical application:





Linear luminaire

- IP20
 - Up to 10 690 lm
 - Up to 145 lm/W
 - \updownarrow -20°C to +35°C
- Lenght - L08/L11/L14/L17



Characteristics:

- White painted steel profile with PMMA optics
- Available in different colour temperatures (Tc)
- Different beam radiant optics (narrow/wide/for rack aisles)
- Emergency kit/Dimming on request
- Surface or suspended mounting

Typical application:



Linear luminaire

- IP43
 - Up to 10 690 lm
 - Up to 145 lm/W
 - \updownarrow -20°C to +35°C
- Lenght - L08/L11/L14/L17

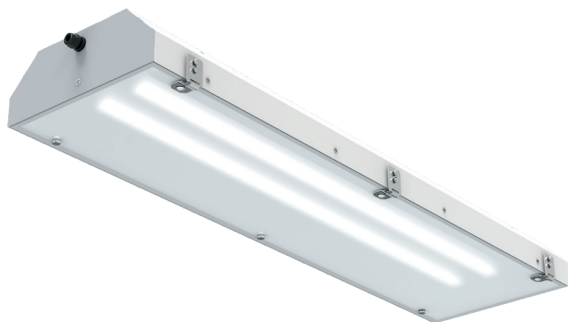


Characteristics:

- White painted steel profile with PMMA optics
- Available in different colour temperatures (Tc)
- Different beam radiant optics (narrow/wide/for rack aisles)
- Emergency kit/Dimming on request
- Surface or suspended mounting

Typical application:





Steep roof luminaire

- IP65
- IK10 + 20J
- Up to 24 845 lm
- Up to 131 lm/W
- \updownarrow -20°C to +65°C
- Length - L07/L13/L16



Characteristics:

- Painted steel housing RAL 9016 (stainless steel on request)
- Diffuser:
CG: clear tempered safety glass
OPG: Opal tempered safety glass
- Available in different colour temperatures (Tc)
- Emergency kit/Dimming on request
- Surface, recessed or suspended mounting

Typical application:



Production halls



Maintenance areas



Car industry workdecks



Steep roof luminaire

- IP66
- IK10 + 20J
- Up to 9 545 lm
- Up to 157 lm/W
- \updownarrow -20°C to +60°C
- Length - L12



Characteristics:

- Painted steel housing RAL 9016
- Opal tempered safety glass
- Diffuser:
CG: clear hardened safety glass
OPG: matt hardened safety glass
- Available in different colour temperatures (Tc)
- Surface or suspended mounting

Typical application:



Freezers



Heating plants



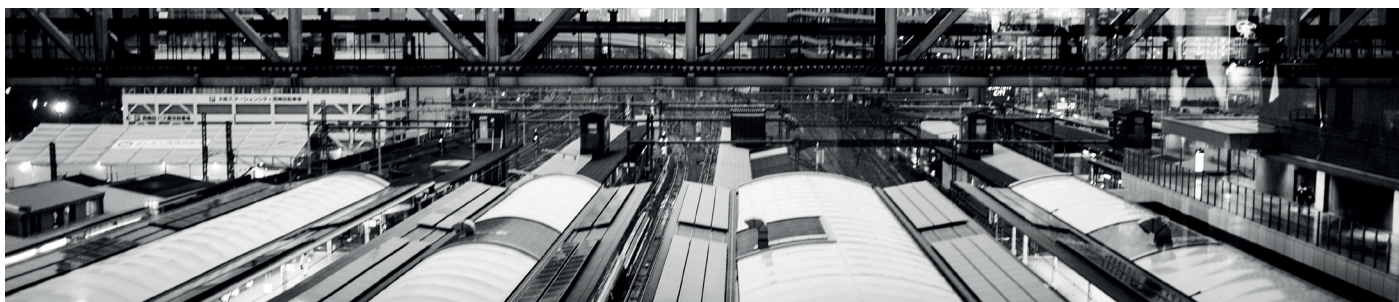
Power plants



Production halls



Car industry workdecks



EXTRA-LED-PLUS EXTRA-LED-FROST



Linear luminaire

- IP66
- IK10
- Up to 10 911 lm
- Up to 162 lm/W
- -40°C to +70°C
- Length - L12/L15



Characteristics:

- High impact polycarbonate housing RAL 7035
- Opal polycarbonate diffuser
- Available in different colour temperatures (Tc)
- Dimming on request
- Surface or suspended mounting

Typical application:



Freezers



Food & beverages
production areas



Production
halls



Power plants

SALUKA-LED-PLUS SALUKA-LED-FROST



Linear luminaire

- IP66
- IK07
- Up to 10 348 lm
- Up to 164 lm/W
- -40°C to +70°C
- Length - L07/L13/L16



Characteristics:

- Painted steel sheet housing RAL 9016
- Opal tempered safety glass
- Available in different colour temperatures (Tc)
- Dimming on request
- Surface or suspended mounting

Typical application:



Freezers



Heating
plants



Power plants



Production
halls




EXTREME-LED-PLUS

EXTREME-LED-FROST



Linear luminaire

- IP65
- Up to 9 891 lm
- Up to 147 lm/W
-  -40°C to +75°C
- Length - L13/L16



Characteristics:

- Aluminium alloy with ELOX surface treatment equipped with plastic ends caps (polycarbonate)
- Polycarbonate end caps
- Opal tempered safety glass
- Available in different colour temperatures (Tc)
- Dimming on request
- Surface or suspended mounting

Typical application:



Freezers



Heating plants



Power plants



Production halls





VYRTYCH a.s.
Židněves 116
294 06 Březno
CZECH REPUBLIC

WWW.VYRTYCH.COM

03/2025