

CUSTODIAL AND VANDALPROOF LIGHTING



APPLICATIONS

CUSTODIAL

This group of luminaires is characteristic by higher degree of resistance to impact and there are secured against of unauthorized access, so inmates would not be able to hide any illegal object inside of luminaire according to prison rules.



TRANSPORT

Transportation areas need to provide multi-purpose tool in busy places like railway stations and subway. Mainly it creates safety environment, that makes the visitors feel comfortable and assists them in finding the right passages and exit points. Additionally it ensures passenger safety and security under all circumstances.



COMMUNITY AND PUBLIC

Using solutions with lowest possible need of maintenance is an advantage for community in way of no need for constant investments for providing safety for its residents, when the darkness comes. At this moment safety hazards like cracks in the sidewalk or left objects in parking garages could cause injury. Community and public lighting prevents such incidents by illuminating the areas and revealing potential safety hazards.



SECURE HEALTHCARE

Light is a crucial component of healing and wellbeing, therefore the parameters of the luminaires are very important. On one side it has to allow doctors best possible practice and patients to heal in comfort. On the other side the luminaires have to be safe against possible patient self-harming in secure healing premises such as psychiatric clinic for example.





Antivandal linear luminaire

- IP65
- IK11+120J
- Up to 11 639 lm
- Up to 145 lm/W
- -20°C to +60°C
- Lenght - L06/L13/L16



Characteristics:

- Robust painted steel housing RAL 9016
- Extremely impact resistant clear polycarbonate diffuser
- Safety screws
- Night light version available
- Emergency kit/Dimming on request
- Comply with ANTI-LIGATURE or SUICIDE RESISTANT requirements
- Surface, wall or ceiling mounting

Typical application:



Antivandal linear luminaire

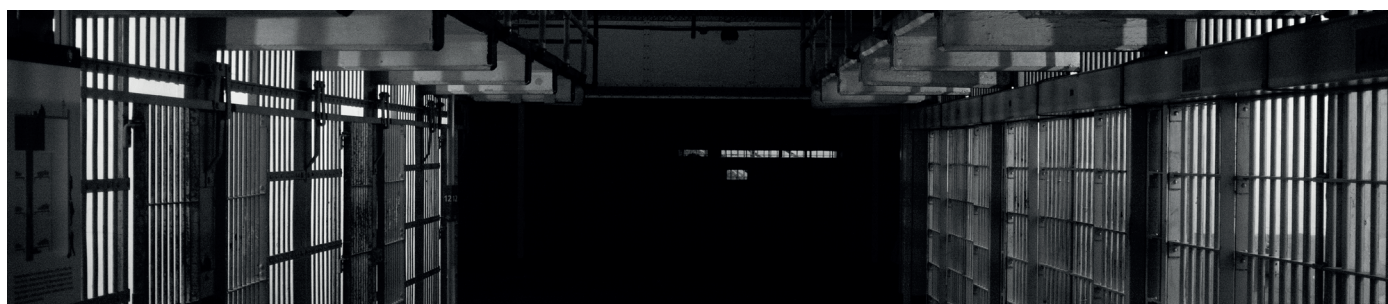
- IP65
- IK11+55J
- Up to 6 710 lm
- Up to 140 lm/W
- -20°C to +60°C
- Lenght - L04/L07/L12/L15

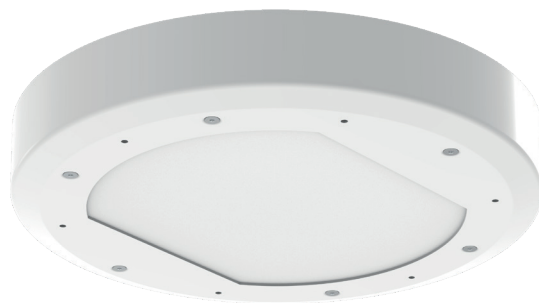


Characteristics:

- Robust painted steel housing RAL 9016
- Extremely impact resistant clear polycarbonate diffuser
- Safety screws
- Night light version available
- Emergency kit/Dimming on request
- Comply with ANTI-LIGATURE or SUICIDE RESISTANT requirements
- Surface, wall, ceiling mounting, recessed via frame for recessed installation or corner mounting via set for corner installation

Typical application:





Antivandal linear luminaire

- IP66/67, IP42
- IK11+60J
- Up to 5 787 lm
- Up to 117 lm/W
- -20°C to +50°C
- Length - L09/L10/L14/L19

Antivandal circular luminaire

- IP65
- IK10
- Up to 4 472 lm
- Up to 120 lm/W
- -20°C to +30°C



Characteristics:

- Painted steel housing RAL 9016 equipped with polycarbonate end caps
- Extremely impact resistant opal polycarbonate diffuser
- Safety screws
- Night light version available
- Emergency kit/Dimming on request
- Surface, wall or ceiling mounting

Characteristics:

- Painted steel housing RAL 9016
- Extremely impact resistant opal polycarbonate diffuser
- Safety screws
- Emergency kit/Dimming on request
- Comply with ANTI-LIGATURE or SUICIDE RESISTANT requirements
- Surface, wall or ceiling mounting

Typical application:




Typical application:





Antivandal linear luminaire

- IP65
- IK10
- Up to 7 781 lm
- Up to 122 lm/W
-  -20°C to +30°C
- Length - L06/L09/L12



Characteristics:

- Painted steel housing RAL 9016
- Extremely impact resistant opal polycarbonate diffuser
- Safety screws
- Emergency kit/Dimming on request
- Recessed mounting

Typical application:



Custodial



Transport

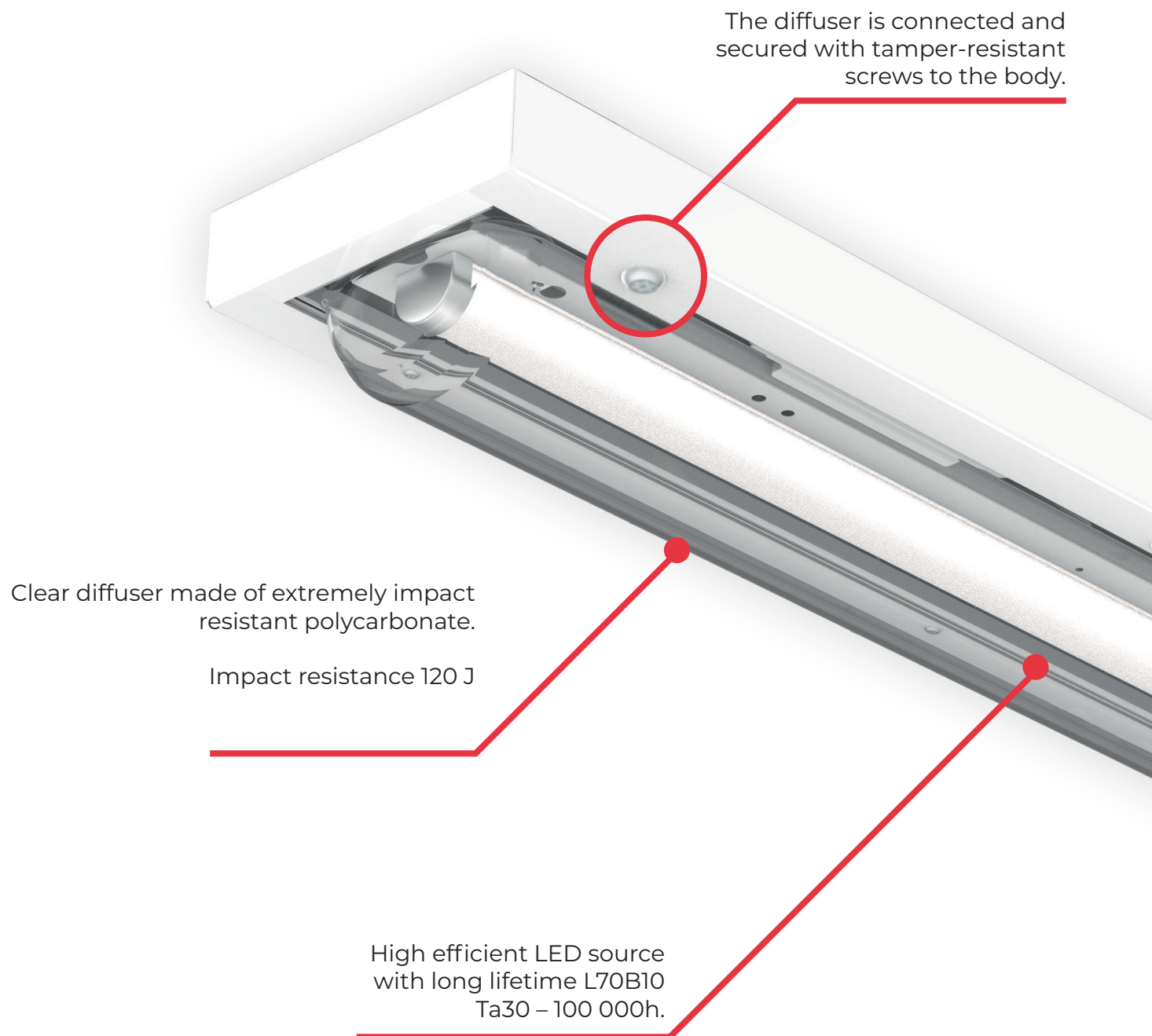


Community & Public



Secure healthcare






The construction of the luminaire does not allow any objects to be hidden in the luminaire.

Body made of extremely resistant sheet steel, white painted RAL 9016.

The design of the diffuser allows you to inspection the luminaire from four sides.



VYRTYCH a.s.
Židněves 116
294 06 Březno
CZECH REPUBLIC

WWW.VYRTYCH.COM

03/2025